



Ares 12

Industrial measuring and monitoring for 14 sensors, communication over GSM and back-up power



Battery



1-Wire sensors



Digital inputs



SMS notifications



E-mail notifications



Data logging



USB data port



SensDesk portal

Ares 12 is an **industrial unit** for remote monitoring and alarming over GSM for locations without LAN access. Includes battery backup. Connect **up to 14 external sensors and 2 dry contact detectors**.

Use the SensDesk portal to configure the Ares, send alarms or display graphs

Ares monitors the readings of connected sensors. When a value reaches the alarm threshold, the device sends an e-mail or a text message (SMS), or dials specified numbers.

Ares products are ready for remote mass deployment using FOTA (Firmware Over The Air).

Connect up to 14 sensors or a relay output extender unit over the 1-Wire/1Wire UNI bus (RJ11) and up to 2 dry contact inputs for external detectors.

Data can be sent in e-mail attachments or downloaded via USB. Display the data using the SensDesk portal, its iOS or Android mobile version, or third-party apps (Nagios etc.).

The device can be configured remotely at the "AresConf" tab in the SensDesk portal. Remote firmware upload (FOTA) capability makes Ares devices ideal for large-scale deployments.

Alarms are notified by calling and texting up to 5 numbers, e-mailing up to 5 addresses, or via the SensDesk portal.

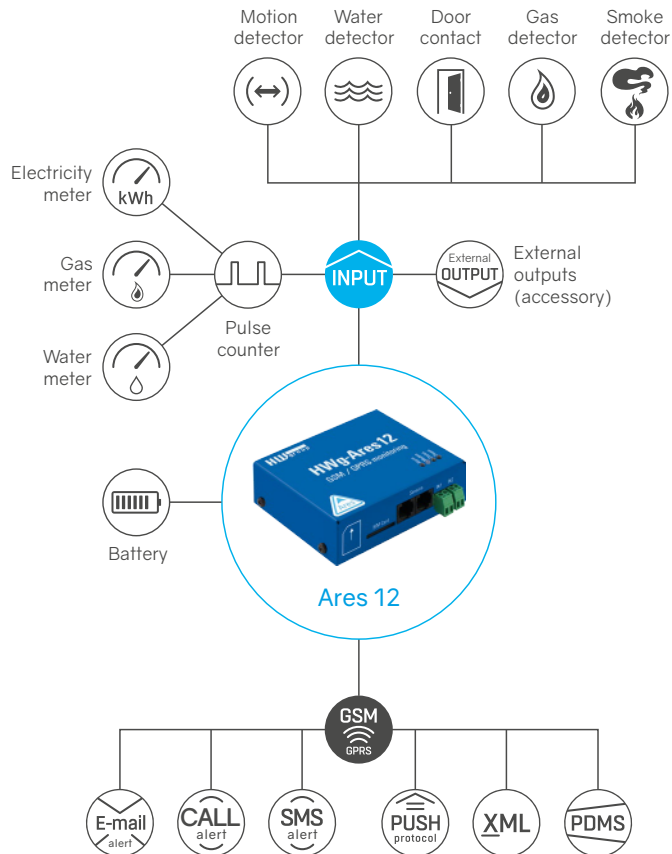
Ares 12 includes an internal battery that provides back-up power for up to 24 hours.

The "Tset" start set includes a temperature sensor with a cable that can be extended to up to 60 m.

Ares 12 can be mounted to a wall or a DIN rail.

Typical application examples

- GPRS monitoring of machines and their environment
- ATMs – environment monitoring without tampering with the connection
- Art exhibits and depositories
- Storages of food or materials
- Cooling systems and coolers



Differences between Ares 12 vs. Ares 10

	Ares 12	Ares 10
1-Wire UNI sensors	14x	3x
External Relay Outputs compatible	✓	✗
Battery	✓	✗

GSM/GPRS	
Interface	Quad-Band 850/900/1800/1900 MHz, GPRS class 10/8 Compliant to GSM phase 2/2 + – Class 4 (2W @ 850 / 900MHz) – Class 1 (1W @ 1800 / 1900MHz)
Supported protocols	IP: TCP, UDP, HTTP, SMTP, HWg-PUSH

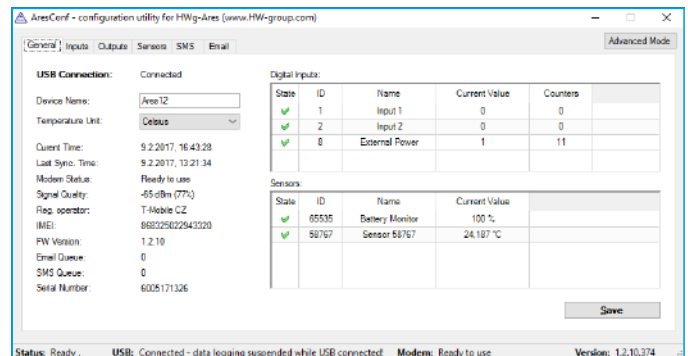
Sensors	
Type	HWg original accessories: 1-Wire & 1-Wire UNI
Connector	RJ11 (1-Wire Bus)
Sensors	Up to 14 sensors
Sensor distance	Up to 60 m

Dry contact inputs	
Port	I1, I2
Type	Digital Input (supports NO/NC Dry contact)
Sensitivity	1 (On) = 0-500Ω (Right pin on the terminal block can be connected to 12 V GND)
Max. distance	Up to 50 m

Power input	
Port	9–30V DC
Type	Main device power input (typically 500 mA)
Connector	Jack (barrel, inner 2,1mm outer 5,5 mm) + Terminal Block

Physical parameters	
Temperature range	Operating: 5 to +50 °C (+41 to +122°F) Storage: –25 to +85°C (–13 to +185°F)
Dimensions / Weight	76x93x28 mm / 150g
EMC	FCC Part 15, Class B, CE - EN 55022, EN 55024, EN 61000

Configuration interface



Versions and related products



Ares 12 plain
14x 1-Wire UNI, 2x DI, device with battery only



Ares 12 set
Bulk + temperature sensor, power adapter, GSM antenna, USB cable and CD with software



Ares 10
3x 1-Wire UNI, 2x DI



Expander 4xDI 1W-UNI
Expands one 1-Wire UNI to four digital inputs



Converter 2xPt100 1W-UNI
Double converter for Pt-100 and Pt-1000 probes